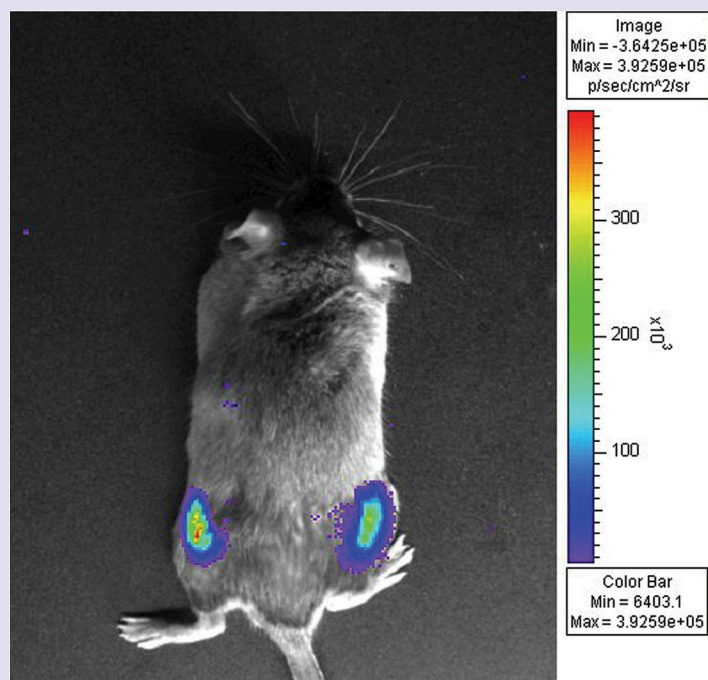




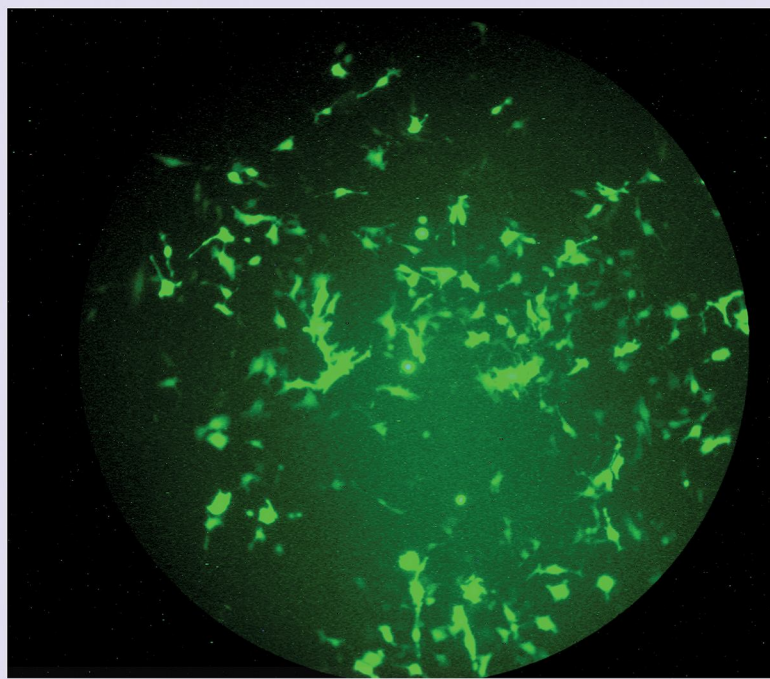
SONIDEL SP100

Sonoporation Platform

In Vivo



In Vitro



- *In Vitro*, *In Vivo*, *Ex Vivo*, *In Ovo* transfection/nucleic acid transfer
- Optimised pre-set ultrasound output programs for use with SONIDEL STK10[®] Transfection Kit[®] and SONIDEL MB101[®] Microbubble
- Precision engineered
- User friendly
- Self-contained robust ultrasound head
- Ultrasound head compatible with direct insertion into tissue culture medium
- A genuine cost break-through device

SONIDEL Limited

Tele: ++353 (0)1 4434 358 (Ireland)
 Fax: ++353 (0)1 6865 462
 E-mail: sales@sonidel.com
 Web: www.sonidel.com
 Tele: ++1 (617) 297-2435 (United States)
 Tele: ++44 (0)20 3239 4904 (United Kingdom)



SONIDEL SP100

Sonoporation Platform

Features

Output Frequency

Output frequency is fixed at precisely 1 MHz for optimised and reproducible penetration of ultrasound through tissue culture vessels and tissue-based targets.

Ultrasound Power Density Options

Ultrasound power density/intensity options between 0 and 5 W/cm² with adjustments of 0.1 W/cm².

Duty Cycle Range

A wide range of duty cycles ranging from 5 – 100% in 5% increments and emitting at a pulse frequency of 100 Hz.

Automated Treatment Control Time

Automated control of treatment time that may be adjusted in seconds up to a treatment time of 90 seconds and thereafter in minutes up to a treatment time of 60 minutes.

Water-sealed Ultrasound head

The ultrasound head is water-sealed and compatible with operational immersion in liquid.

Pre-programmed Treatment Parameters

Supplied with 10 Operating Programs, 5 of which are pre-programmed to the appropriate treatment parameters to achieve optimal ultrasound-mediated transfection with the SONIDEL STK10 Positive Control Transfection Kit. The other 5 programs may be adjusted to the specific conditions chosen by the operator.

Ultrasound Dosage Feedback Control

The ultrasound head is equipped with a feedback control that automatically switches off the timer if contact with the target and transmission of ultrasound to the target is compromised. In this case the timer countdown mechanism will cease at the precise time contact was compromised and an audible alarm will sound.

Custom Features Available

Custom features may be supplied on demand.

SONIDEL Limited

Tele: ++353 (0)1 4434 358 (Ireland)

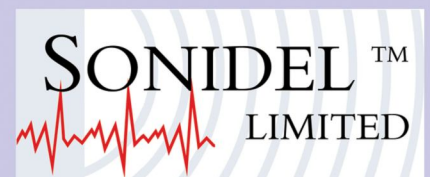
Fax: ++353 (0)1 6865 462

E-mail: sales@sonidel.com

Web: www.sonidel.com

Tele: ++1 (617) 297-2435 (United States)

Tele: ++44 (0)20 3239 4904 (United Kingdom)



SONIDEL SP100

Sonoporation Platform

Specifications:

Frequency:	Continuous and pulsed ultrasound at an optimally pre-set precise frequency of 1 MHz.
Display:	Intensity in W/cm ² (SATP*)
Contact control threshold:	65 %
Treatment time display and control buttons:	0 – 90 seconds and then switches to minutes (2-60), coupled to contact control. For enhanced operator control and feedback, the time display will stop counting down if adequate acoustic ultrasound contact with the target is compromised. This allows the operator to identify the precise time to which the target was exposed to ultrasound in the event of a failure in contact between the ultrasound head and the target
Ultrasound, continuous: Pulse frequency / duty cycle Power density/intensity (Output)	100 Hz / 100 % 0 - 5 W/cm ² , adjustable in 0.1 Wcm ² increments
Ultrasound, pulsed: Pulse frequency / duty cycle Power density/intensity (Output)	100 Hz / 5-100 % in 5% increments 0 - 5 W/cm ² , adjustable in 0.1 Wcm ² increments
Treatment head: 1 MHz, Standard	Geometric surface 1.5 cm ² , ERA** 0.8 cm ² , BNR*** max. 6 type collimating, side panel radiation max. 10 mW/cm ²
Mains adapter: Model number Mains voltage Frequency Max, Power consumption	ENB-1530 100 - 240 Volt 50/60 Hz 40 VA
Safety class:	*II according to IEC 60601-1
Dimensions:	220 x 200 x 195 mm
Weight:	1.7 kg
CE marking:	****
Safety standards:	IEC 60601-1 and IEC 60601-2-5
Environment conditions for Transport and Storage: Environment temperature Relative humidity Atmospheric pressure	-10° till +50° C 10 till 100 % 500 till 1060 hPa
Environment conditions normal use: Environment temperature Relative humidity Atmospheric pressure	10° till 40° C 10 till 90 % (non condensing) 500 till 1060 hPa
* ** *** *II ****	SATP = Spatial Average Temporal Peak (average pulse power) ERA = Effective Radiating Area, this is the effective radiating area of the treatment head BNR = Beam Nonuniformity Ratio, indicates the ratio between the peaks and the average value of the intensity in the sound beam. A low BNR excludes high, unwanted energy concentrations Safety class II (double insulated) According to European requirement EMC Directive (89/336/EEC or superseding directive) and Low Voltage Directive (73/23/EEC)

SONIDEL Limited

Tele: ++353 (0)1 4434 358 (Ireland)

Fax: ++353 (0)1 6865 462

E-mail: sales@sonidel.com

Web: www.sonidel.com

Tele: ++1 (617) 297-2435 (United States)

Tele: ++44 (0)20 3239 4904 (United Kingdom)

